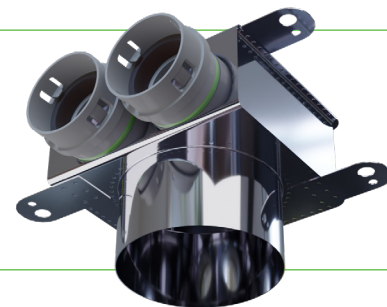
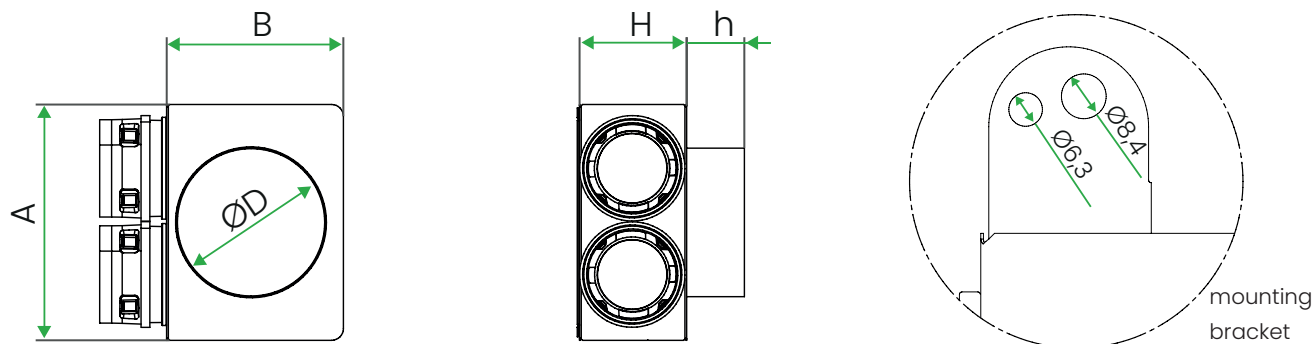


PEFLEX INOX Stainless Steel Angular Plenum Box

For ventilation ducts Ø50



Dimensions



Boxes with nipple spigot (for extension)

	Product code	Number of spigots	ØD (hole diameter) [mm]	A (length) [mm]	B (width) [mm]	H (height) [mm]	h (spigot height) [mm]
For Ø100 diffusers	1x50/98	1	98	140	125		
	2x50/98	2		140			
	3x50/98	3		190			
	4x50/98	4		250			
For Ø125 diffusers	1x50/123	1	123	150	150	59	53
	2x50/123	2		150			
	3x50/123	3		190			
	4x50/123	4		250			
	5x50/123	5		310			
	6x50/123	6		370			
For Ø160 diffusers	3x50/158	3	158	190	190		
	4x50/158	4		250			
	5x50/158	5		310			
	6x50/158	6		370			

Boxes with socket spigot (for direct connection to the diffuser)

	Product code	Number of spigots	ØD (hole diameter) [mm]	A (length) [mm]	B (width) [mm]	H (height) [mm]	h (spigot height) [mm]
For Ø100 diffusers	1x50/100	1	100	140	125		
	2x50/100	2		140			
	3x50/100	3		190			
	4x50/100	4		250			
For Ø125 diffusers	1x50/125	1	125	150	150	59	53
	2x50/125	2		150			
	3x50/125	3		190			
	4x50/125	4		250			
	5x50/125	5		310			
	6x50/125	6		370			
For Ø160 diffusers	3x50/160	3	160	190	190		
	4x50/160	4		250			
	5x50/160	5		310			
	6x50/160	6		370			

Description

PEFLEX INOX stainless steel plenum boxes are equipped with plastic connection sockets for ducts **in the CLIK system with a built-in gasket**, which significantly speeds up the installation and **guarantees its tightness**. PEFLEX INOX Ø50 plenum boxes are designed for the installation of round PEFLEX ventilation ducts with an outer diameter of 50 mm. Each box is equipped with mounting brackets with hole diameters of Ø6.3 and Ø8.4 mm.

PEFLEX INOX angular plenum boxes are available in two variants, with the following connectors:

- **socket** - for direct connection of Ø100, Ø125 or Ø160 diffusers.
- **nipple** - for mounting an extension tube with an internal diameter of 100, 125 or 160 mm.