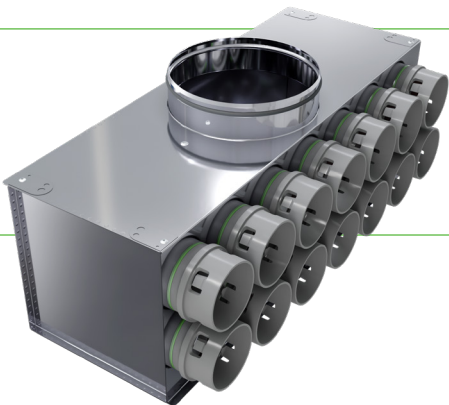


# Double-Row PEFLEX Standard Manifolds



## General Description:

Double-row PEFLEX Standard manifolds are ready-to-install boxes for supply and exhaust ventilation systems with heat recovery. Made of stainless steel (INOX), they are equipped with 14 or 16 Ø75 mm sockets arranged in two rows. The main Ø198 mm spigot can be positioned at the back, on the side, or on top. Their compact design allows installation in ceilings, attics, or floors, while the welded casing ensures high airtightness and long-lasting durability.

## Application:

These boxes are used to distribute supply and exhaust air in mechanical ventilation systems with heat recovery. The ready-made configurations allow for fast installation without the need for a custom design.

## Variants:

- Double-row through manifold - with one Ø198 mm nipple spigot with built-in gasket
- Double-row angular manifold - with one Ø198 mm nipple spigot with built-in gasket
- Double-row directional manifold - with one Ø198 mm nipple spigot with built-in gasket
- Number of sockets: 14 Ø75 mm or 16 Ø75 mm, arranged in two rows

## Benefits:

- Ready-to-use solution, reducing installation time
- Durable and resistant to external conditions
- Universal application
- High airtightness and secure connections

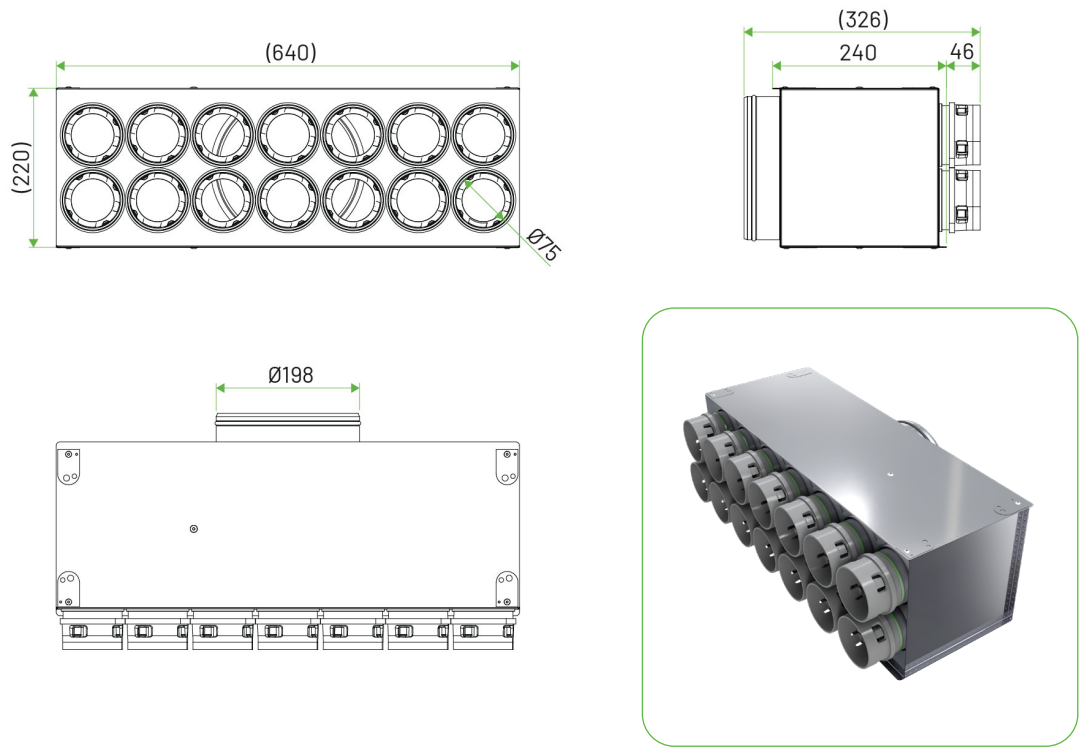
## Technical Features:

- High-quality stainless steel (INOX) casing
- Ø75 mm sockets with built-in gaskets and PEFLEX CLICK mounting system – quick, airtight, and durable duct connections without additional sealing
- Universal mounting brackets for ceiling, floor, or attic installation
- Welded, airtight construction ensuring long-lasting durability

Number of sockets	Maximum airflow
14 x Ø75 mm	do 420 m³/h
16 x Ø75 mm	do 480 m³/h

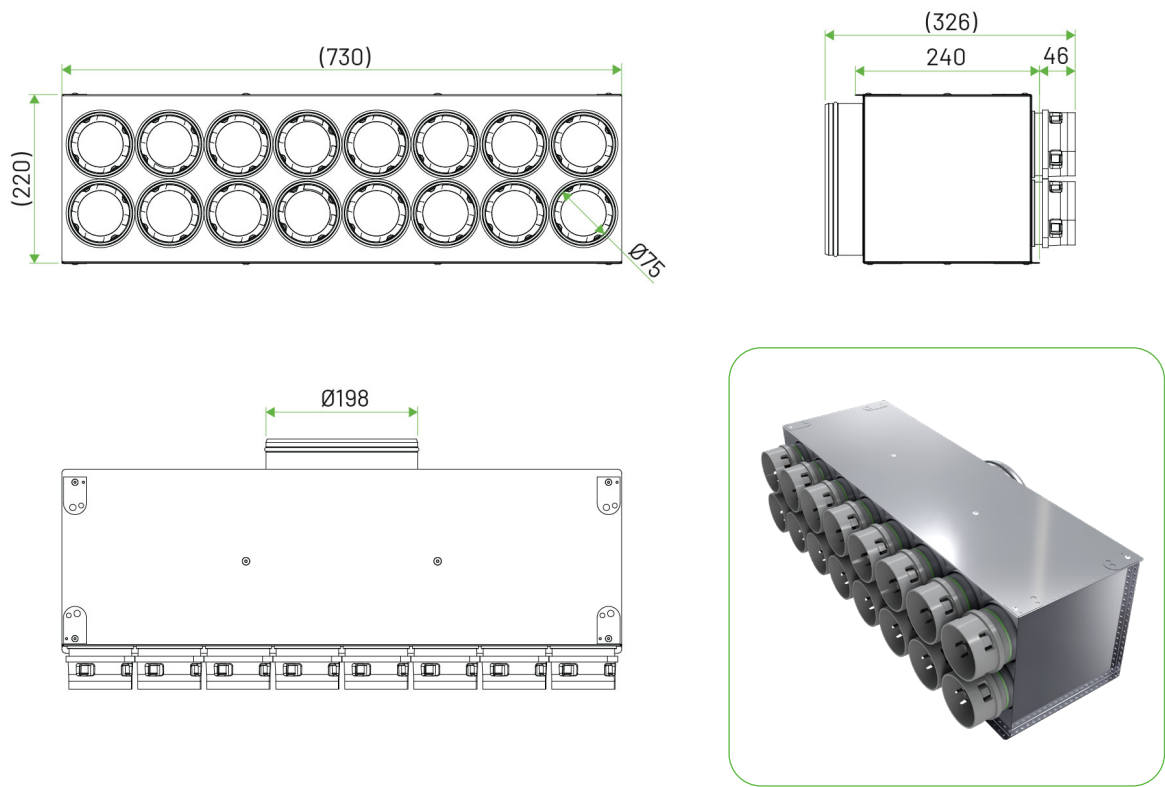
- **NCOQ** – double-row through manifold

**14x75/198 mm**

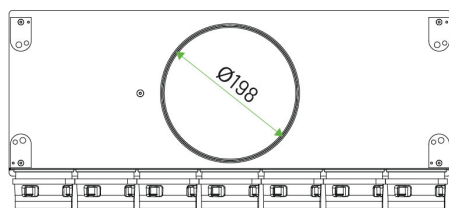
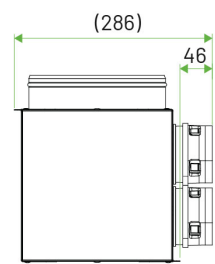
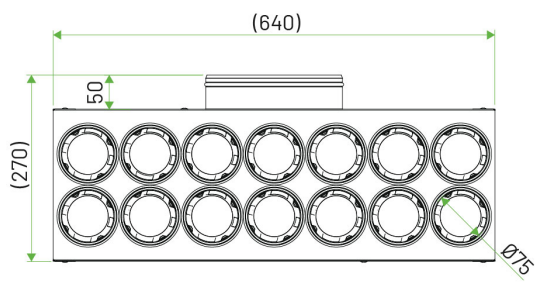


- **NCOT** – double-row through manifold

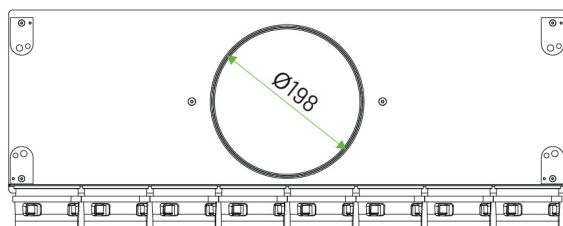
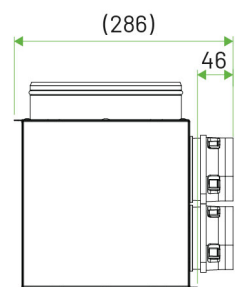
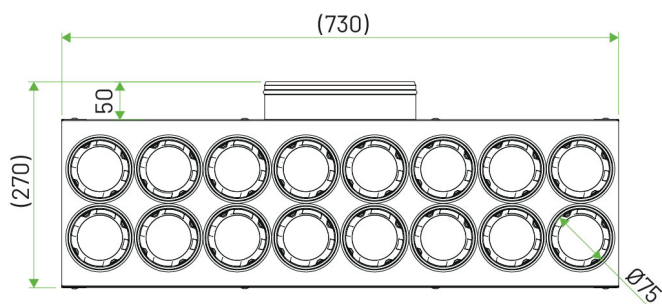
**16x75/198 mm**



- **NCOR** – double-row angled manifold  
**14x75/198 mm**

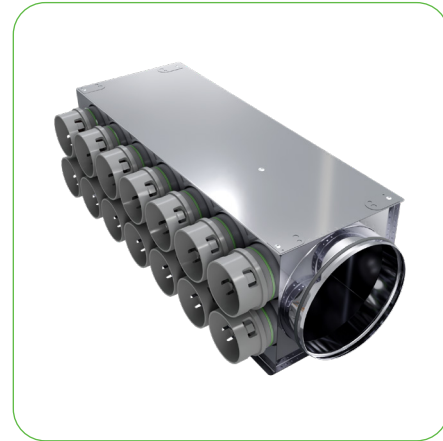
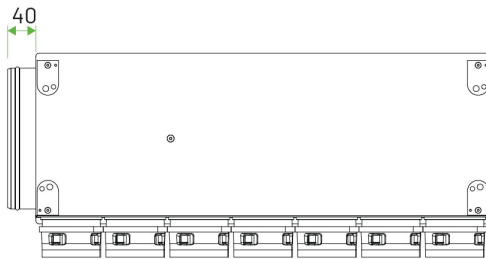
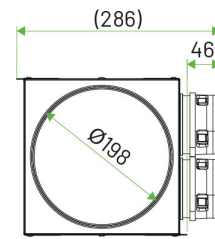
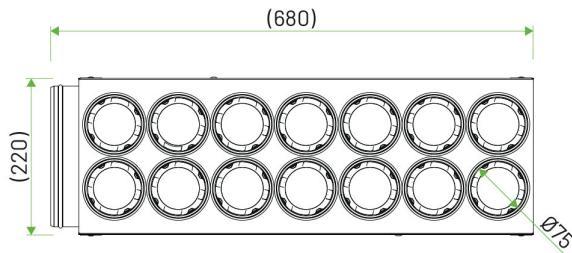


- **NCOU** – double-row angled manifold  
**16x75/198 mm**



- **NCOS** – double-row directional manifold

**14x75/198 mm**



- **NCOV** – double-row directional manifold

**16x75/198 mm**

