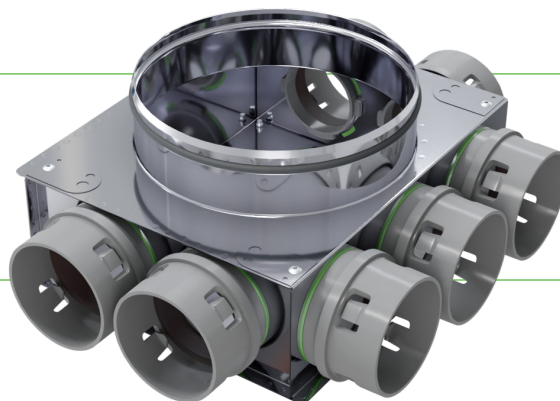


Flat PEFLEX Standard Manifolds



General Description:

Flat PEFLEX Standard manifolds are ready-to-install boxes for supply and exhaust ventilation systems with heat recovery. Made of durable stainless steel (INOX), they are resistant to corrosion and demanding operating conditions. Their compact, low-profile design allows installation in confined spaces – in attics, between floors, or under ceilings.

Application:

Ventilation manifolds are used to evenly distribute supply and exhaust air in mechanical ventilation systems with heat recovery. They allow multiple ventilation ducts to be connected to individual rooms, ensuring optimal air distribution throughout the building. Primarily used in residential installations, they guarantee quiet and efficient system performance.

Variants:

- Flat manifold – with one Ø198 mm nipple spigot
- Flat top/bottom manifold – with two Ø198 mm nipple spigots (on opposite sides)
- Number of sockets: 7x75 mm, 9x75 mm, 14x75 mm, 16x75 mm

Technical Features:

- Made of stainless steel (INOX)
- Ø75 mm sockets with built-in gaskets and the PEFLEX CLICK mounting system – quick, airtight, and durable duct connections without the need for additional sealing
- Universal mounting brackets for installation under ceilings, in floors, or in attics
- Welded, airtight construction ensuring high durability
- Pre-installed gaskets on Ø198 mm spigots

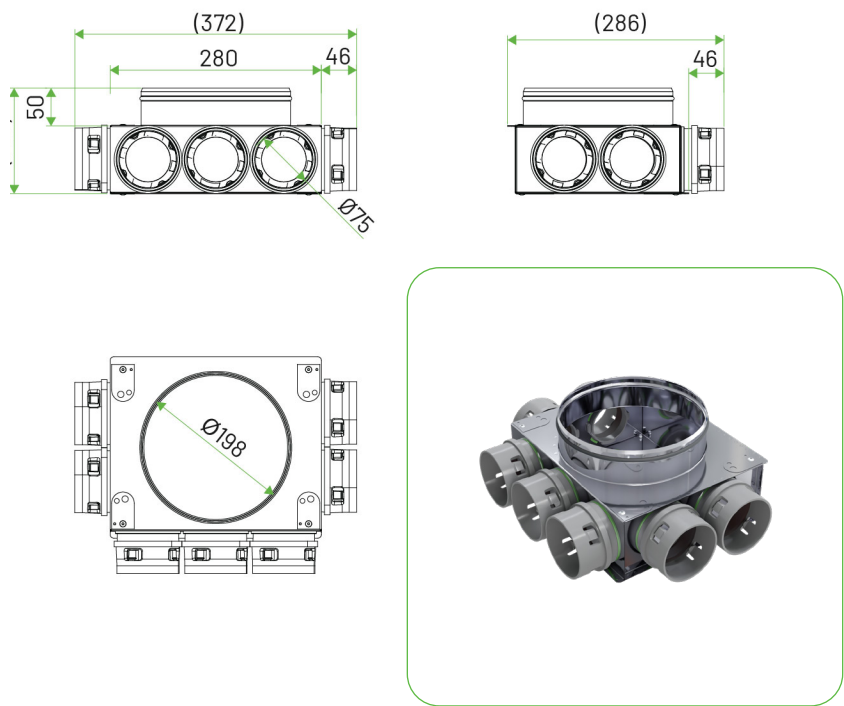
Number of sockets	Maximum airflow
7 x Ø75 mm	do 210 m³/h
9 x Ø75 mm	do 270 m³/h
14 x Ø75 mm	do 420 m³/h
16 x Ø75 mm	do 480 m³/h

Benefits:

- Ready-to-use solution, reducing installation time
- Durable and resistant to external conditions
- Universal application
- High airtightness and secure connections

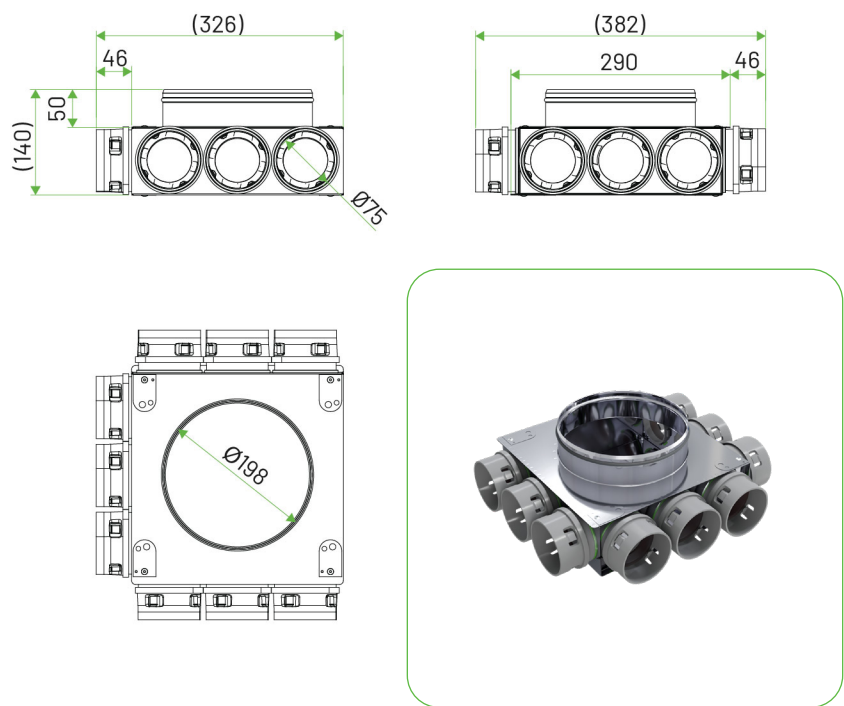
- **NCPC** – flat manifold

7x75/198 mm



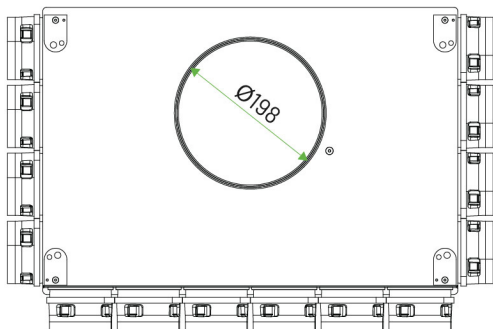
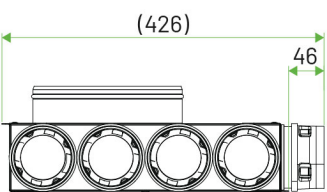
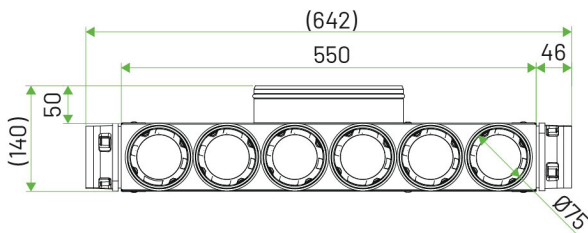
- **NCOW** – flat manifold

9x75/198 mm



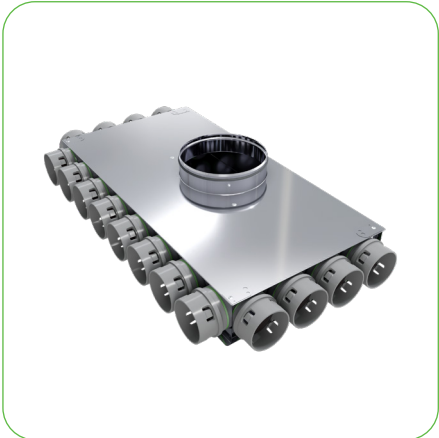
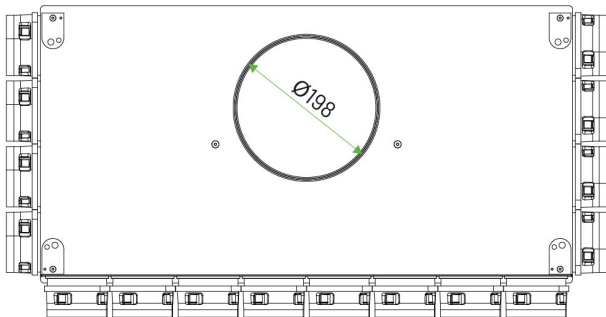
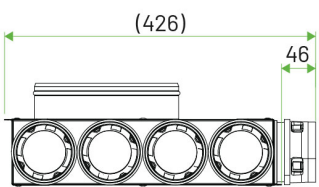
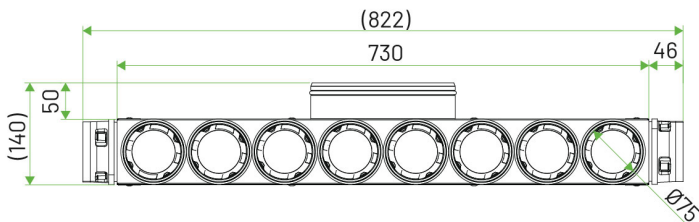
• **NCPE** – flat manifold

14x75/198 mm



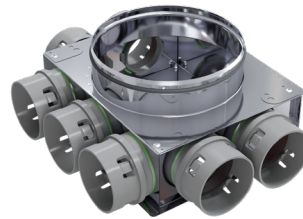
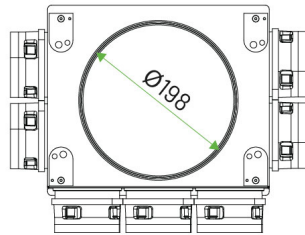
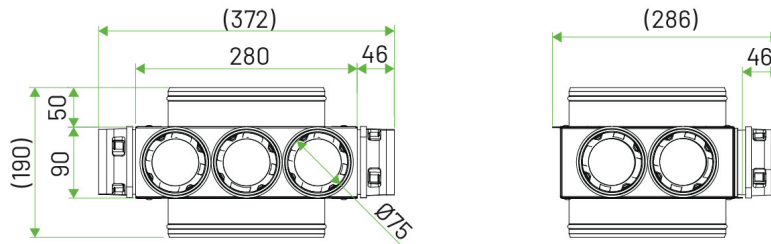
• **NCPF** – flat manifold

16x75/198 mm



- **NCPD** – flat manifold (top/bottom connection)

7x75/198 mm



- **NCOX** – flat manifold (top/bottom connection)

9x75/198 mm

