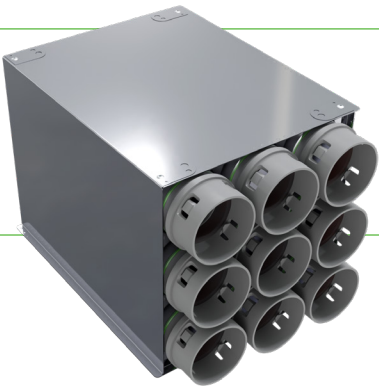


Triple-Row PEFLEX Standard Manifolds



General Description:

Triple-row PEFLEX Standard manifolds are professional, ready-to-install boxes for supply and exhaust ventilation systems with heat recovery. Made of stainless steel (INOX), they are highly durable and airtight thanks to their welded construction. The sockets arranged in three rows allow convenient branching of ventilation ducts to different rooms.

Application:

Designed for ventilation installations with heat recovery, these boxes enable quick and reliable duct connections, ensuring efficient air distribution throughout the building.

Variants:

- Triple-row through manifold - with one Ø198 mm nipple spigot
- Number of sockets: 9xØ75, arranged in three rows

Technical Features:

- High-quality stainless steel (INOX) casing
- Ø75 mm sockets with built-in gaskets and PEFLEX CLICK mounting system – fast, airtight, and durable duct connections without additional sealing
- Universal mounting brackets for installation under ceilings, in floors, or in attics
- Welded, airtight construction ensuring long-lasting durability

Number of sockets	Maximum airflow
9 x Ø75 mm	do 270 m³/h

Benefits:

- Ready-to-use solution, reducing installation time
- Durable and resistant to external conditions
- Universal application
- High airtightness and secure connections

- **NCQM** – triple-row through manifold

9x75/198 mm

